

# INTERCEPTOR

YOUR KEY TO THE NEXT LEVEL OF ARCHERY



GEAR

# INTERCEPTOR

MANUAL  
EDITION 1



GEAR

# YOUR KEY TO THE NEXT LEVEL OF ARCHERY:

## PRECISION, POWER AND TACTICS COMBINED.

By purchasing the INTERCEPTOR crossbow, you have chosen an innovative and advanced product that sets new standards in the world of crossbows. This crossbow combines groundbreaking technology with thoughtful design, providing you with an unparalleled and dynamic shooting experience.

This model is the first crossbow with a bottom-loaded bolt magazine. This innovation gives the device the distinctive appearance and handling of a rifle. The bottom magazine guide allows for a continuous sight line along the entire length of the crossbow, optimizing your aiming accuracy and focus while shooting. The weight and perfect balance also ensure an authentic shooting experience and comfortable handling.

The crossbow's locking mechanism and trigger system are impressive in their precision. It uses special claws that securely hold the string, and the shot is released through a classic trigger that operates with precision and reliability. During the loading process, the trigger decouples from the lock, allowing the shooter to maintain their aim on the target. This technique improves shot release and increases shooting efficiency.

For added safety, the INTERCEPTOR is equipped with a manual safety mechanism that incorporates a proven rifle safety system. This safety ensures that the crossbow can be used securely before the shot is fired, preventing accidental trigger pulls. This allows you to discharge your shots in a controlled manner.



The crossbow allows for tool-free assembly and disassembly of the limb through an innovative locking bolt that can be released with light pressure. The limb is also secured in a block mount, allowing for complete removal.

It offers extensive customization options to optimize your shooting position. The adjustable foregrip and adjustable stock can be individually adjusted and fully replaced. Additionally, the stock can be mounted in either the lower or upper position using the two provided mounts. This flexibility allows you to modify the crossbow according to your personal preferences and needs and configure it for different shooting styles and scenarios.

Equipped with an upper and two side Picatinny rails, the INTERCEPTOR offers a variety of mounting options for accessories. The upper rail is suitable for scopes and sighting devices, while the side rails provide space for additional accessories. These options allow you to customize the crossbow to your liking and be prepared for any challenge.

The INTERCEPTOR is the result of intensive development work. It combines functionality with exceptional flexibility and precision, making it the perfect choice for shooters seeking a new and extraordinary experience.

# DANGERS & SAFETY INSTRUCTIONS

The following rules apply to the use of any crossbow. Therefore, please also observe all general rules of shooting sports and the specific regulations of your country regarding the use of crossbows.

For your safety, carefully and thoroughly read the entire user manual before using the INTERCEPTOR for the first time. It is the user's responsibility to be aware of and comply with the legal regulations concerning crossbows in their country.

## HANDLING AND SHOOTING OPERATION

**Safety Handling:** Treat the INTERCEPTOR with the same caution as a loaded firearm. Always keep the crossbow pointed in a safe direction and never aim at people or animals.

**Cocking and Trigger:** Cock the INTERCEPTOR only immediately before shooting, and never transport it while cocked. Place your finger on the trigger only when you are ready to shoot.

**Safety Mechanism:** The INTERCEPTOR is equipped with a safety mechanism. The safety is in the upper position when the crossbow is secured, and the trigger is blocked. Disengage the safety only immediately before shooting to prevent accidental discharge. Ensure the safety is in the lower position before shooting.

**String and Limb Safety:** Make sure there are no obstacles or body parts in the path of the string or limbs. Always place your supporting hand on the provided vertical foregrip.

**Avoid Dry Firing:** Never shoot without an arrow in place (dry firing) to avoid damaging the INTERCEPTOR and prevent injury. Inspect arrows for damage before loading.

**6.3" Bolts:** Use standard **6.3" bolts**. We recommend bolts from the specialist dealer **GoGun** [[www.gogun.de](http://www.gogun.de)] to ensure maximum functionality and durability.

**Bolt Inspection:** Never use bent or damaged bolts. Due to its design, it is possible to cock the INTERCEPTOR without an arrow loaded. Therefore, keep track of how many bolts you have fired to avoid dry firing. The INTERCEPTOR's magazine is equipped with a viewing window, allowing easy verification of whether there is still an arrow in the magazine.

## MAINTENANCE AND STORAGE

**Regular Maintenance:** Before and after each use, inspect the INTERCEPTOR for loose screws, visible damage, and signs of wear, especially on the string. Replace any worn parts.

**Screw Connections & Limb:** Regularly check that all screws are securely tightened. Pay special attention to the front screw that secures the limb. The INTERCEPTOR can only shoot accurately if the limb is firmly and as centrally aligned as possible on the crossbow.

**Care & Maintenance:** Lubricate the arrow track of the crossbow with a specialized lubricant, such as silicone grease. Regularly maintain the string with appropriate wax and check it for wear. If the center serving of the string is damaged, replace the string or renew the center serving.

**Uncocking and Storage:** Uncock the INTERCEPTOR when you are finished shooting. Never store the INTERCEPTOR in a cocked state. Keep the crossbow in a locked container when not in use to prevent unauthorized access. Be sure to comply with your country's specific laws regarding the storage of crossbows.

---

**Age Restriction:** According to German weapons law, the INTERCEPTOR may only be purchased and used by individuals who are 18 years of age or older.

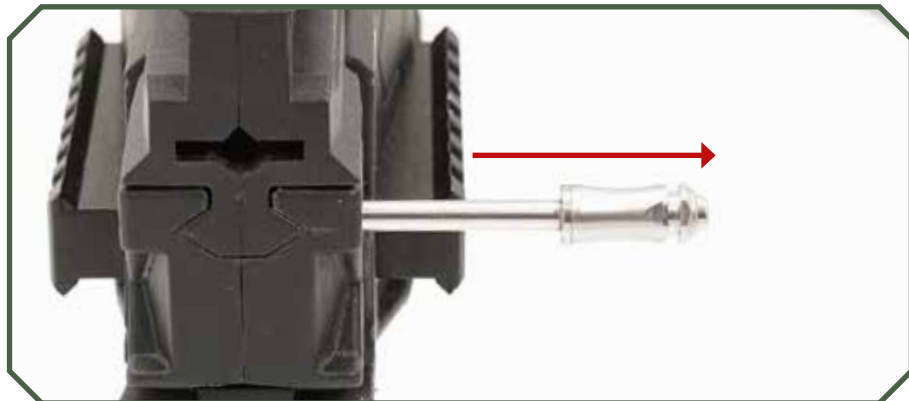
**Disclaimer:** The manufacturer accepts no liability for damages or injuries resulting from improper use or disregard of the instructions.

We recommend 6.3" bolts from the specialist dealer **GoGun** [[www.gogun.de](http://www.gogun.de)]

# ASSEMBLY OF THE INTERCEPTOR

## STEP 1: UNLOCKING

The INTERCEPTOR allows for **tool-free assembly** and disassembly of the limb. To mount the limb of the INTERCEPTOR, start by loosening the safety pin: **Press the button of the safety pin** and pull it out completely (Fig. 1 – 3).



After removing the safety pin, grasp the **cover** and pull it firmly forward. The INTERCEPTOR is now unlocked and ready for the assembly of the limb (Fig. 4).

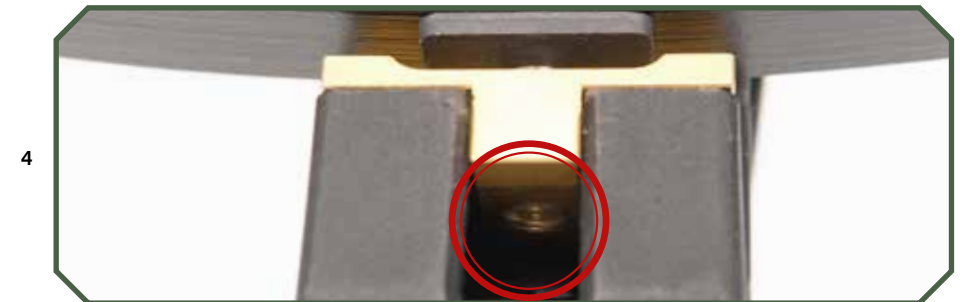


## STEP 2: MOUNTING THE LIMB

After removing the **cover**, fold the two tension arms backward (Fig. 1). The limb comes with the string already attached. Insert the string into the INTERCEPTOR so that it rests in the upper arrow groove. Then, place the limb so that the block mount is centered on the designated bracket (Fig. 2). Ensure that the open side of the block is facing upwards.

Press the block mount into the bracket with a slight twisting motion until it is fully seated at the bottom (Fig. 3). Make sure that the mounting screw of the block mount is facing forward (Fig. 4).

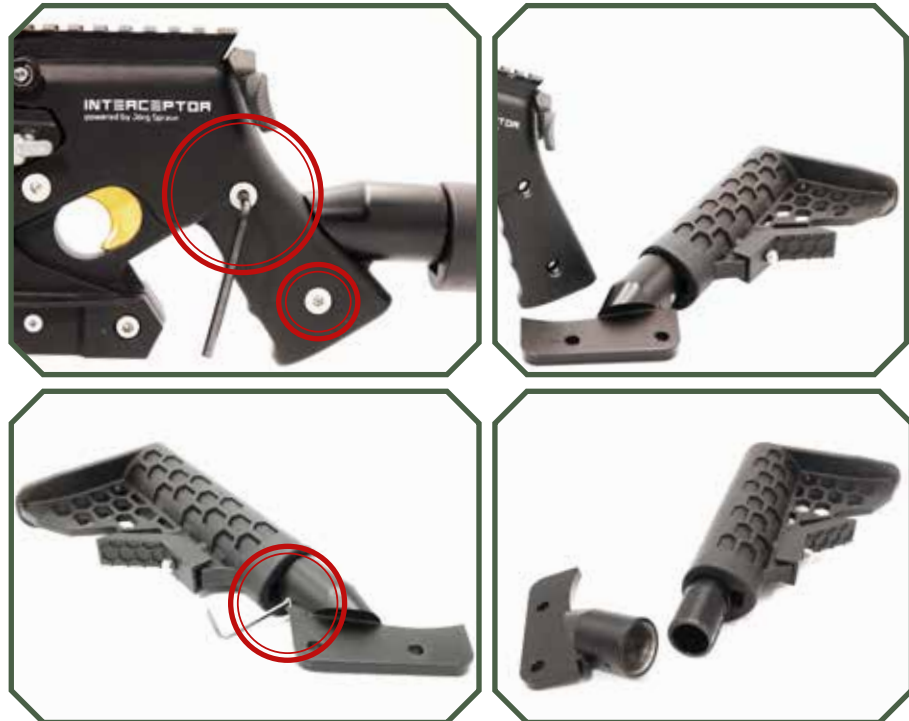
Now fold the **tension arms** back forward and ensure they are correctly seated in their guide rails. Finally, replace the **cover** and insert the safety pin (Fig. 5).



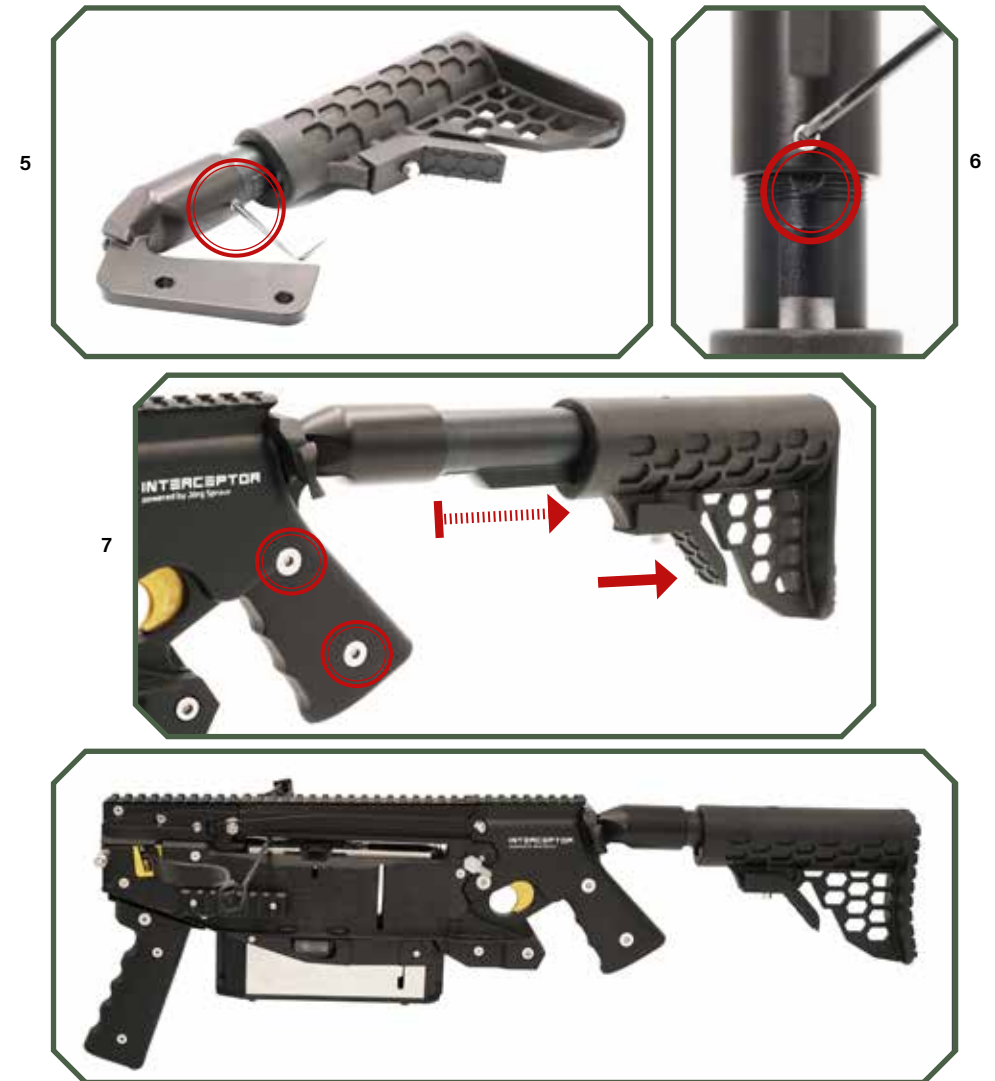
### STEP 3: CHANGING THE BUTTSTOCK (OPTIONAL)

The INTERCEPTOR comes from the factory with the **lower buttstock mount** installed. To switch to the upper buttstock mount, follow these steps:

1. First, use the two supplied **4-mm** Allen wrenches to loosen the two screws of the lower buttstock mount. Open one screw with one Allen wrench while countering from the opposite side with the second Allen wrench (Fig. 1 & 2). Remove the buttstock mount.
2. Use the **3-mm** Allen wrench to slightly loosen the set screw that secures the buttstock to the mount (Fig. 3).
3. Unscrew the buttstock from the lower mount (Fig. 4).



4. Next, screw the buttstock onto the new mount until it is fully seated. Ensure that the buttstock and the mount are aligned centrally—the **notch in the mounting tube** will help with precise positioning. Finally, fully tighten the set screw until it is securely seated in the designated notch on the buttstock's mounting tube (Fig. 5 & 6).
5. Now insert the upper buttstock mount into the INTERCEPTOR and secure it with the two screws you previously removed (Fig. 7).



## STEP 4: FOREGRIP

The **foregrip** of the INTERCEPTOR can be adjusted to suit your needs. To change the position of the foregrip, follow these steps:

1. First, use the **3-mm** Allen wrench to loosen the mounting screw and remove it completely (Fig. 1).
2. Move the foregrip to the desired position, either forward or backward (Fig. 1).
3. Once you have found the optimal position, secure the foregrip by reinserting the screw and tightening it.

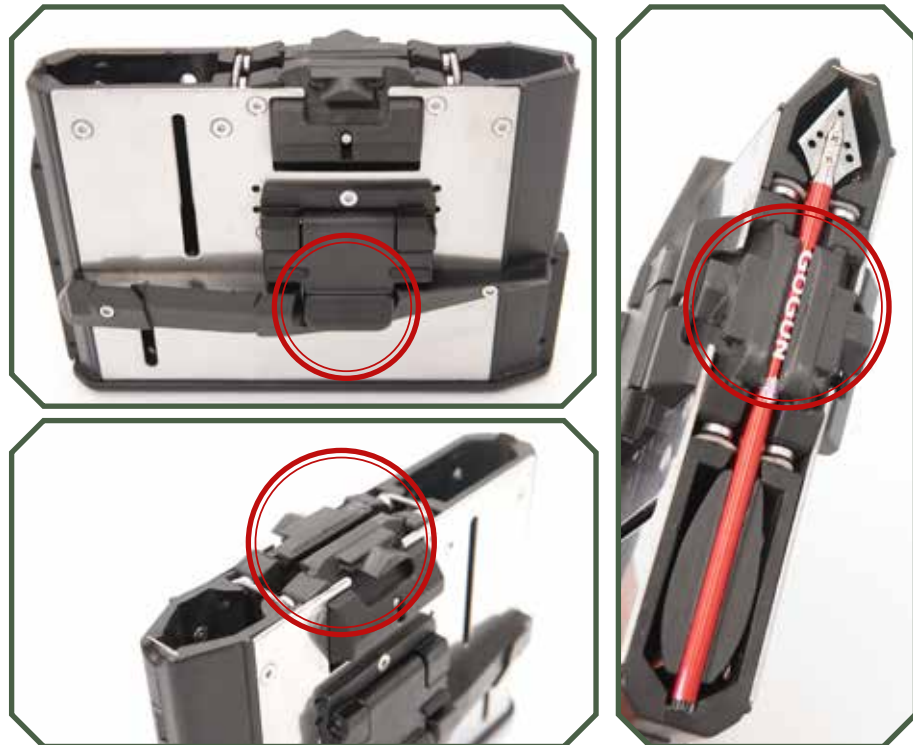




## STEP 5: LOADING AND UNLOADING THE MAGAZINE

The INTERCEPTOR is equipped with a lower magazine guide. The magazine holds up to 18 bolts and is compatible with standard **6.3" bolts**. Thanks to the two viewing windows, you always have a clear overview of the magazine's contents and can easily monitor the fill level. The magazine is easy to insert and remove. Press the **release buttons** on both sides of the magazine simultaneously and pull it out of the INTERCEPTOR (Fig. 1)

- 1. Loading the Magazine:** After removing the magazine, load up to 18 bolts into the magazine's **slider** one by one, applying gentle pressure (Fig. 2 and 3). The bolts will be securely held in place.
- 2. Unloading the Magazine:** Turn the magazine upside down and hold the two slider buttons (Fig. 2 and 3) to fully unload the magazine.



## STEP 6: SHOOTING WITH THE INTERCEPTOR

Insert the loaded magazine into the INTERCEPTOR until it clicks into place (Fig. 1). Use the **thumb lever** to unlock the INTERCEPTOR (Fig. 4). Then pull back the INTERCEPTOR fully. A bolt will now be in the **firing channel**. Close the crossbow completely. The INTERCEPTOR is now ready to shoot. To fire the bolt, pull the trigger with light pressure (Fig. 3). If the trigger is blocked, check if the **manual safety** is activated (Fig. 2 and 3).



# COCKING OR REPLACING THE STRING

## 1. ATTACHING THE COCKING ROPE

The included **silver cocking rope** is a **cocking aid** and is used to either **draw the string** onto the **unstrung limb** of the INTERCEPTOR or **to remove an existing string**. Follow these steps to correctly use the cocking rope in both cases:

1. **Unlocking:** Unlock the INTERCEPTOR and pull out the **cover** assembly (see Step 1 "Assembly of the INTERCEPTOR, Unlocking," page 8). (Fig. 1).

If no string is tensioned on the limb, skip the following steps and proceed directly to Step 1.4 "Inserting the Cocking Rope" on page 19.



1



2



3



4



5



6



7

2. **Preparation of the Cocking Arms:** Remove the two cocking arms from the guide rails and fold them backward.
3. **Inserting the Cocking Arms:** Press the thumb lever and open the crossbow wide enough to insert the cocking arms from the back into the guide rails on both sides (Fig. 2). Position the two hooks of the cocking arms behind the tensioned string (Fig. 4).
4. **Inserting the Cocking Rope:** Thread the cocking rope through the INTERCEPTOR and position it behind the two hooks of the cocking arms. Hook the cocking rope into the designated **inner holders** of the limb end caps on both sides (Fig. 3 - 7).
5. **Activating the Cocking Rope:** Ensure that the INTERCEPTOR is "**unlocked**" (safety lever in the down position) (see "Shooting with the INTERCEPTOR," page 17). Now open the INTERCEPTOR completely and pull the cocking rope until you hear a **distinct click** in the crossbow's mechanism (claw). The cocking rope is now activated. **Set the INTERCEPTOR's safety to the "up position"** to prevent accidental firing.



1

## 2. DRAWING OR REPLACING THE STRING

Once the **cocking rope** is tensioned (see Step 1 “Drawing or Replacing the String, Attaching the Cocking Rope,” Page 18), you can either draw a new string or remove a damaged one. Proceed as follows:

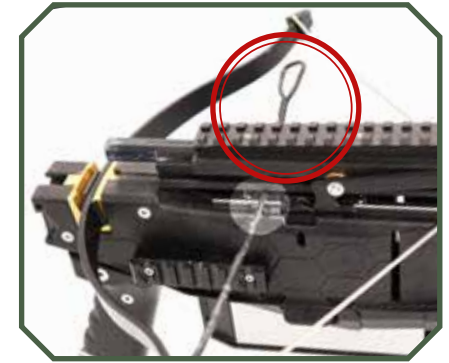
1. **Open the Crossbow:** Open the crossbow until the hooks of the cocking arms are approximately at the level of the crossbow's locking mechanism (claw) (Fig. 1).
2. **Insert the String:** Thread the string through the INTERCEPTOR in front of the two hooks of the cocking arms (Fig. 2 and 3).
3. **Hang the String:** Hook the string into the end cap of the limb on one side (outside). Make sure to pass the string through the loop of the cocking rope (Fig. 4 and 5).

**Note:** Depending on the length of the string, you may need to twist it several times (shorten it). To do this, thread a finger or a suitable object through the hanging string loop and twist the string (twist). Refer to the **note** on Page 23.

4. **Remove the Cocking Rope:** After the string is drawn, release and remove the cocking rope (see Step 3 “Drawing or Replacing the String, Removing the Cocking Rope,” Page 24).



2



3



4



5



### Note:

In Figure 6, it is not clearly visible whether the string is the correct length. The exact length of the string can only be checked once the cocking rope has been removed and the string is fully tensioned (see Fig. 7).

It is important to pay attention to this step to ensure that the string is correctly adjusted and the crossbow achieves its optimal performance.



### Hinweis:

Once you have removed the **cocking rope** (see Step 3 "Cocking or Replacing the String, Removing the Cocking Rope", Page 24), check that the string has a distance of approximately **2 – 2.5** cm from the inner area of the cocking arm hooks, as recommended by the manufacturer. This distance indicates the recommended string tension and prevents excessive wear from impacts.

If the distance is incorrect, the cocking rope must be used again to adjust the string length, either shortening or lengthening it as necessary (see Fig. 7).

**Note:** Ensure that the string has a distance of approximately 2 – 2.5 cm from the inner area of the cocking arm hooks, as recommended by the manufacturer.

### 3. REMOVING THE COCKING ROPE

To remove the **cocking rope**, follow these steps:

1. **Check Safety:** Ensure the INTERCEPTOR is in the "**safe position**". Set the manual safety to the lower position (refer to Step 6, "**Shooting with the INTERCEPTOR**").
2. **Positioning:** Place the INTERCEPTOR upright with the foregrip firmly on the ground or securely hold it in your lap to prevent it from slipping (Fig. 1).
3. **Open:** Open the INTERCEPTOR fully.
4. **Tighten the Cocking Rope:** With a bit of **force**, open the INTERCEPTOR slightly beyond its limit to tighten the cocking rope by about **1 cm**. This will relieve pressure on the crossbow's lock (claw).
5. **Trigger Mechanism:** Simultaneously engage the trigger mechanism manually with your finger or a suitable object by pressing it downwards (Fig. 1 and 2). Close the crossbow slowly and release the cocking rope. You can now remove the cocking rope.
6. **Reset the Cocking Arms:** Fully open the INTERCEPTOR so you can pull both cocking arms out of their guides. Close the crossbow and fold the cocking arms forward, then place them back into their guide rails.
7. **Secure:** Slide the **cover** back onto the INTERCEPTOR and secure it with the locking pin



# SUPPORT THROUGH DEALERS

Please note that we distribute our products exclusively through specialized dealers, and technical customer service is also provided directly through your dealer.



PLEASE VISIT „**MEYGEAR.DE**“  
FOR INSTRUCTION MANUAL IN  
YOUR LANGUAGE.

Copyright 2024 – All content, including text and graphics, is protected by copyright. All rights, including reproduction, publication, modification, and translation, are reserved! mey GEAR is a trademark of Mey Systems GmbH, Merlach 16, 96145 Sesslach-Merlach.



**GEAR**

PRECISION, POWER AND TACTICS COMBINED

